

Summary

Hall A – Bigbite – ECAL

- Three supermodules assembled (in all, 53)

Hall A – Bigbite – HCAL

- Relabeled, tightened connectors on, and terminated 48 BNC-LEMO signal cables

Hall A – Gas System

- Meeting held to discuss scope of work on upcoming Hall A Super Bigbite gas system.

Hall B – LTCC

- Developed CSS-BOY screens for gas supply and purifier and added screens to *clascss*.

Hall B – Magnets

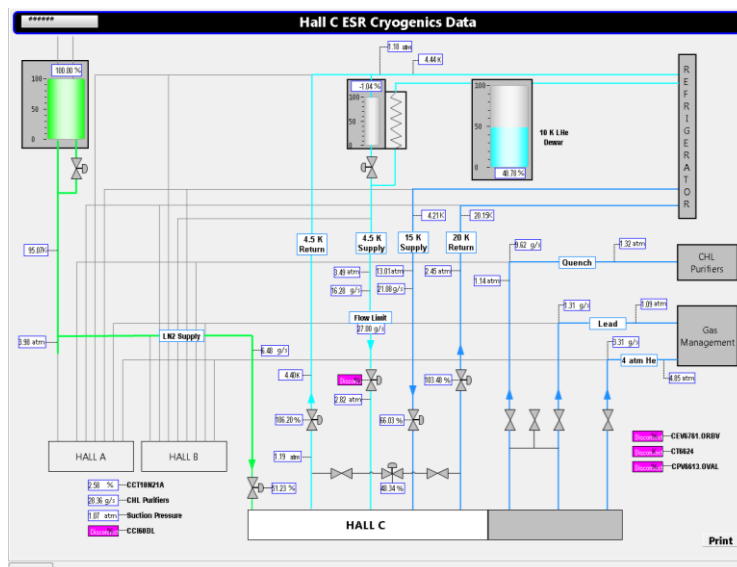
- Started FastDAQ modifications by changing LabVIEW program
 - * FastDAQ cRIO sends data to PLC and EPICS
 - * Test used baseline 10 kHz module acquisition rate with 5 Hz transmission rate to EPICS.

Hall B – RICH

- Added alarms for N₂ backup system pressure transducers to RICH alarms GUI and added screen to *clascss*.

Hall C – EPICS

- Reworked Python-based backup/restore program to remove dependency on *pyepics* and pre-defined file paths.
- Developed CSS-BOY screen for HMS Dipole Interlocks.
- Developed CSS-BOY screen for ESR cryogenics.



CSS-BOY screen for Hall C ESR Cryogenics



Detector Support Group

Weekly Report, 2019-07-10

Hall C – CAEN HV Test Station

- Modified CSS-BOY screen for test station's expert GUI to test CAEN 7030TN modules.
- Modified manufacturing drawing of HV distribution chassis to reduce profile.

Hall D – WEDM

- Provided directory structure to *epicsweb* admins to create links in menu for Hall D screens.

HDice

- Replaced 24 V power supply in IGH with 30 V power supply.

DSG R&D – cRIO Test Station

- Completed NI9219 module manual voltage tests for differential nonlinearity, dynamic range, gain error, integral nonlinearity, and offset error for ± 1 V, and ± 0.125 V ranges.
- Completed NI9219 module automatic voltage tests for ± 60 V range.